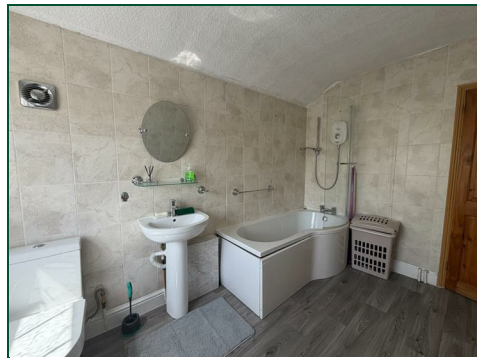




Leslie Road

Semilong, Northampton

oriordanbond
LETTINGS



Leslie Road

Semilong

NN2 6BD

£1,050 PCM

Available early June is this spacious terraced property located in the popular area of Semilong. The property comprises of an entrance hall, lounge/diner with French doors leading to the rear garden, extra reception room/breakfast room, fitted kitchen with some appliances and door leading to the garden, cellar, two good sized double bedrooms and a large family bathroom with shower over bath. Externally to the rear is an enclosed, paved garden with planted borders. Further benefits include gas radiator heating and double glazing.

Tenancy Information

- Deposit: £1,211.00 (1 Week Holding Deposit - £242.00)
- Smokers: Not Allowed
- Unfurnished
- Length of Tenancy: Long term
- Available: Early June 2026

Additional information

- Council Tax Band: A
- Energy Efficiency Rating: D

Viewing

Viewing strictly by appointment – details below

Disclaimer

O'Riordan Bond Estate Agents Limited has not tested apparatus, equipment, fittings or services and so cannot verify they are in working order. The buyer is advised to obtain verification from their solicitor or surveyor.

O'Riordan Bond Weston Favell Lettings
01604 814400

lettingswestonfavell@oriordanbond.co.uk

